

FS Future Serie®

Grailfinder

User's manual

Any information contained in these operating instructions may be changed without prior notice.

OKM does not make any warranty for this document. This also applies without limitation to implied assurances of merchantability and fitness for a specific purpose. OKM does not assume any responsibility for errors in this manual or for any incidental or consequential damage or loss associated with the delivery, exploitation or usage of this material.

This documentation is available „*as presented*“ and without any kind of warranty. In no circumstances OKM takes responsibility for lost profits, usage or data losses, interruption of business activities or all kind of other indirectly damages, which developed because of errors in this documentation.

This instruction manual and all other stored media, which are delivered with this package should only be used for this product. Program copies are allowed only for security- and safety purposes. The resale of these programs, in original or changed form, is absolutely forbidden.

This manual may not be copied, duplicated or translated into another language, neither in part nor completely, over the copyright matters without the prior written consent of OKM.

Copyright ©2002 – 2007 OKM Ortungstechnik GmbH. All rights reserved.

Contents

1	Preface	7
2	Important Notes	8
2.1	General Notes	8
2.2	Possible Health Hazards	8
2.3	Surrounding Area	8
2.4	Voltage	9
2.5	Data safety	9
3	Technical Specifications	10
3.1	Control Unit	10
3.2	Data Transmission	10
3.3	Computer, Minimum Requirements	11
4	Scope of Delivery	12
5	Assembly	14
6	Installation of Radio Transmission (Toshiba)	16
6.1	Install Software & Drivers	16
6.2	Software Configuration	19
6.3	Configure connection	20
7	Installation of Radio Transmission (Conceptronic)	21
7.1	Windows XP, 2000, ME und 98SE	21
7.1.1	Install Software & Drivers	21
7.1.2	Install Bluetooth-Dongle	25
7.1.3	Configure connection	28
7.2	Windows Vista	29
7.2.1	Install Bluetooth-Dongle	29
7.2.2	Establish connection	32
8	Control Elements	34
8.1	Front View	34
8.2	Back View	35
8.3	Touchpad for Menu Navigation	36
9	Operating Modes	37
9.1	Activate Magnetometer	37
9.2	Automatic Scan To PC	37
9.3	Automatic Scan In Memory	38
9.4	Manual Scan In Memory	38
9.5	Activate Cavfinder	39
9.6	Transfer To PC	40

10 Analysis and Evaluation of Measurements	41
10.1 Metal or Mineralisation	41
10.2 General Procedure	43
10.3 Regulation of the Number of Impulses	44
11 Danger of Explosion during Excavation	46
12 Maintenance and Services	47

List of Figures

1	Scope of delivery	13
2	Connection of probe and control chip with the device	14
3	Connection of joystick and headphones	14
4	Connection of external power supply and USB Dongle	15
5	Bluetooth-Installation	16
6	Bluetooth-Installation, Select Language	16
7	Bluetooth-Installation, Start	17
8	Bluetooth-Installation, Licence Agreement	17
9	Bluetooth-Installation, Setup	18
10	Bluetooth-Installation, Finish	18
11	Bluetooth-Installation, Reboot	19
12	Determining the given COM-Port	19
13	20
14	Bluetooth-Installation	21
15	Bluetooth-Installation, Select Language	21
16	Bluetooth-Installation, Start	22
17	Bluetooth-Installation, Licence Agreement	22
18	Bluetooth-Installation, Destination Folder	23
19	Bluetooth-Installation, Setup	23
20	Bluetooth-Installation, Finish	24
21	Bluetooth-Installation, Reboot	24
22	Bluetooth-Installation, Plug in the Bluetooth-Dongle	25
23	Bluetooth-Installation, Set up Bluetooth-Dongle	25
24	Bluetooth-Installation, Bluetooth-Dongle has been installed	25
25	Find out the assigned COM-Port	26
26	Find out the assigned COM-Port	26
27	Find out the assigned COM-Port	27
28	USB-Connection, Enter PIN-Code	28
29	USB-Connection, Confirm Access	28
30	USB-Connection, Connection established	28
31	Windows Vista, Install Bluetooth-Dongle	29
32	Windows Vista, Set up Bluetooth-Dongle	29
33	Windows Vista, Configurate Bluetooth-Dongle	29
34	Windows Vista, Verify Bluetooth settings	30
35	Windows Vista, Configurate serial COM-Port	30
36	Windows Vista, Configurate serial COM-Port	31
37	Windows Vista, Allow access	32
38	Windows Vista, Set up Bluetooth-Dongle	32
39	Windows Vista, Finish connection assistant	33
40	Windows Vista, List of Bluetooth devices	33
41	Front view	34
42	Back view	35
43	Touchpad	36
44	Graphical representation of a measurement	38
45	Anschluss der Elektroden	39

46	Comparison of object and mineral	42
47	Given manner	43
48	First measurement of an area	44
49	Control scan, Variant A	44
50	Control scan, Variant B	44
51	Effect of number of impulses and their distance	45
52	Comparison of small and high number of impulses	45

List of Tables

1	Technical Specifications (Control Unit)	10
2	Technical Specifications (Data Transmission)	10
3	Technical Specifications (Computer, Minimum Requirements)	11
4	Scope of delivery	12

1 Preface

Dear customer,

in the first instance we want to thank you that you made your decision on a product of OKM Ortungstechnik GmbH.

With the Grailfinder you purchased a product which is based on a electromagnetic pulse method which can be used to locate anomalies in the target area. Thus the device is able to detect natural features such as formations of strata, cavities, groundwater level as well as sepulchers or buried objects such as pipes, tanks, boxes or suchlike.

The Grailfinder is able to locate, to document and to analyse buried objects with different structures, without making necessary any excavation. Particularly in areas next to the surface there are many advantages to geoelectric, seismic and magnetic procedures and it is further more a usefull complement to these methods. The Grailfinder has a facile and flexible handling and provides fast and easy reproducible results.

With our team of specialists we guarantee that our products are under recurrent control. Our specialists try to implement new developments in terms of further quality improvements for you.

Of course by selling our products we cannot guarantee that you really make a find during your research. The recognition of hidden objects and structures depends on a hugh number of factors - like you know. Determining factors are the dielectricity constant of the ground, the grade of mineralisation and the dimensions of an object relating to its depth. Specially in very wet soil, clay and sand with high conductivity of the ground, recording of the measured results can be falsified strongly.

With this product you purchased a device which stood the tests in regular operation like all other products of us. If you are interested in where our devices have gone into action please visit our homepage.

For our company it is necessary that we protect our developments within the framework of existing legislation to a patent or trademark registration. Therewith we offer you a higher warranty while using our products.

Please take your time consecutively, read this user's manual and familiarize yourself with the utilisation and operation of this Grailfinder.

2 Important Notes

Please read these operating instructions carefully and closely before using *Grailfinder* and its accessories! These instructions give information on how to use the device and point out potential sources of danger.

Grailfinder and its accessories serves for documentation and analysis of detect objects deposited and changes performed in the ground. The registered data of the ground structure will be transmitted to a PC for visual representation in a special software program using the components we offer. Any additional notes relating to this has to be observed. Please read attentively the manual according to the software you are using!

2.1 General Notes

Being an electronic device, *Grailfinder* has to be treated with the caution and care necessary when such devices are used. Any failure to observe the safety precautions given or any use for purposes other than the ones it is conceived for may result in a damage or destruction of the processing unit and connected components.

The device will get destroyed if it is opened improperly.

2.2 Possible Health Hazards

If used properly the device normally does not pose any health hazards. According to current scientific knowledge, the high-frequency signals are not harmful to the human body on account of their low power.

2.3 Surrounding Area

Having been transferred from a cold to a warmer place, the device should not be operated immediately afterwards. Any condensation, which may have formed, might cause the device to get destroyed. Avoid strong magnetic fields, which may occur in places such as near machines or loudspeakers, and avoid using a detector within a radius of 50 meters.

Metallic objects on the ground such as cans, doses, catches, nails, screw or others can influence negatively your measurement and have to be removed. Also you have to remove keys, telephones, chains and rings and all other magnetic and metallic objects from yourself.

2.4 Voltage

The power supply should not be outside the indicated range of values. Use only chargers, batteries and rechargeable batteries which are included in the scope of delivery.

Never use the 230 Volt mains supply.

2.5 Data safety

There can be errors in the process of data collection if

- the range of the sender module is been exceeded,
- the power supply of the device is to low,
- the cables you are using are to long,
- other electronic devices sends out disturbances or
- atmospherics occurs (lightnings, ...).

3 Technical Specifications

The following technical indications are medial values. During operation small variations are quite possible.

3.1 Control Unit

Dimensions (H x W x D)	430mm x 150mm x 260mm
Weight	about 3kg
Voltage	12 VDC
Processor	Motorola, 4 MHz
Data Memory (internal)	about 1.500 measured values
Operating Temperature	0°C – 50°C
Storage Temperature	-20°C – 60°C
Air Humidity	5% – 75%
Waterproof	No

Table 1: Technical Specifications (Control Unit)

3.2 Data Transmission

Technology	Bluetooth
Frequency	2.4 – 2.4835 GHz
Maximal Data Transmission Rate	1 Mbps
Receiving Sensitivity	-85 dBm
Maximal Range	about 100 meters

Table 2: Technical Specifications (Data Transmission)

3.3 Computer, Minimum Requirements

The computer is not part of the scope of delivery. The indicated values should help you for a correct selection of a suitable computer for analysis of your measured results.

CD-ROM Drive	minimum 4x
COM-Port (Data Transmission)	USB
Free Memory	minimum 20 MB
Working Memory (RAM)	minimum 128 MB
Graphic Card	minimum 64 MB, OpenGL-compatible
Operating System	Windows 98SE, Me, 2000, XP

Table 3: Technical Specifications (Computer, Minimum Requirements)

4 Scope of Delivery

In the following section you can find all standard equipment. The scope of delivery can be different in some circumstances because of some optional accessories which should not be included in the basic equipment.

- 1 Control unit
- 1 Probe
- 4 Electrode (with about 20m cable)
- 1 USB Bluetooth Dongle
- 1 USB Setup CD
- 1 External power supply
- 1 Charger for external power supply
- 1 Cable for external power supply
- 1 3D Software (standard)
- 1 Joystick
- 1 Control chip
- 1 Headphones
- 1 Manual
- 2 Carrying case

Table 4: Scope of delivery

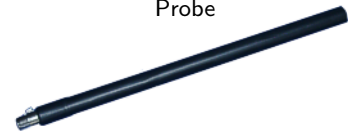
Beware that pictures in this manual could be different to delivered parts.

Control Unit

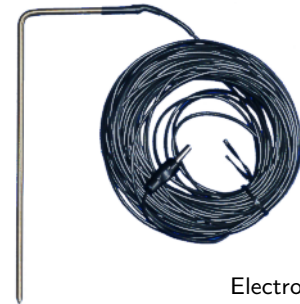


Control Chip

Probe



USB Bluetooth Dongle



Electrode



Cable for External Power Supply



Headphones



Joystick



External Power Supply



Charger for External Power Supply

Figure 1: Scope of delivery

5 Assembly

In this section is explained how to assemble the device and how to prepare a measurement.

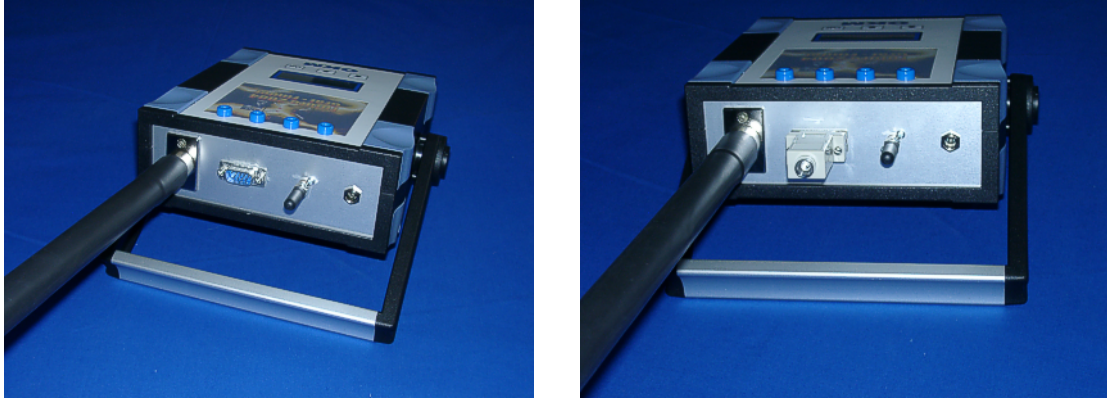


Figure 2: Connection of probe and control chip with the device

Figure 2 indicates how to connect the probe to the control unit. Do it without any unnecessary application of force! The control chip has just to be plugged in the suitable connection on the device. Without this control chip the device cannot operate.

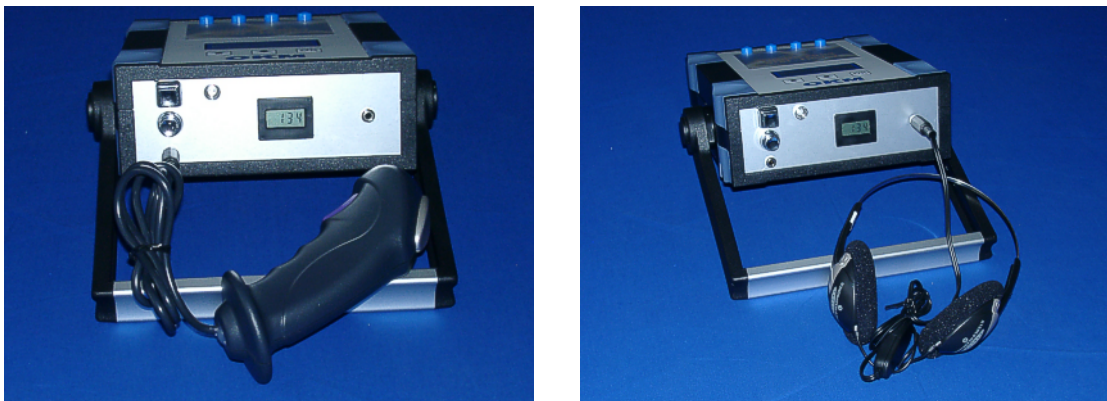


Figure 3: Connection of joystick and headphones

Figure ?? indicates which connection has to be used for joystick and headphones. Please take care not to exchange both elements, otherwise the device can get damaged.



Figure 4: Connection of external power supply and USB Dongle

In figure 4 you can see, how to connect the external power supply. If you connect the external power supply with the control unit you have to use the 12V output for the correct cable connection. Also you can see, how to connect the Bluetooth Dongle with the USB-Port of your computer. Further information about the right use and installation of the right USB-driver you can find in section ?? on page ??.

6 Installation of Radio Transmission (Toshiba)

This section describes the installation of the USB Bluetooth Dongle. Consider that the represented figures not necessarily agree with the current version of your operating system or the version of your USB installation.

The instructions in this chapter are only valid for the Toshiba usb-drivers. If you are using the Conceptronic usb-drivers, please read chapter 7.

6.1 Install Software & Drivers

Now it is time to install the software and driver on your system. Therefore you have to insert your Bluetooth CD into the CD ROM drive of your computer. If the CD does not start automatically, please double click on Desktop and then double click on the symbol of your CD ROM drive. With a further double click on file `setup.exe` you start the installation.



Figure 5: Bluetooth-Installation

The first window of your installation will open. Click here on the entry *Toshiba Driver* and follow the instructions on the screen.

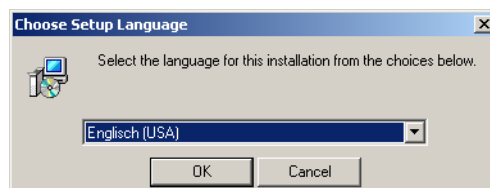


Figure 6: Bluetooth-Installation, Select Language

First there is a possibility to select the language of the installation. Click on *OK*, to change to the installation dialog from figure 7.

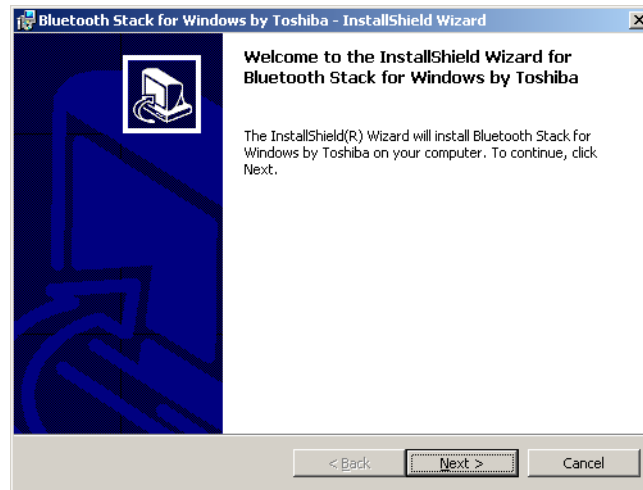


Figure 7: Bluetooth-Installation, Start

Now simply click on *Next*, to continue the installation. A dialog like in figure 8 appears on your screen.



Figure 8: Bluetooth-Installation, Licence Agreement

Select the option *I accept the terms in the licence agreement* and confirm it with a click on *Next*.

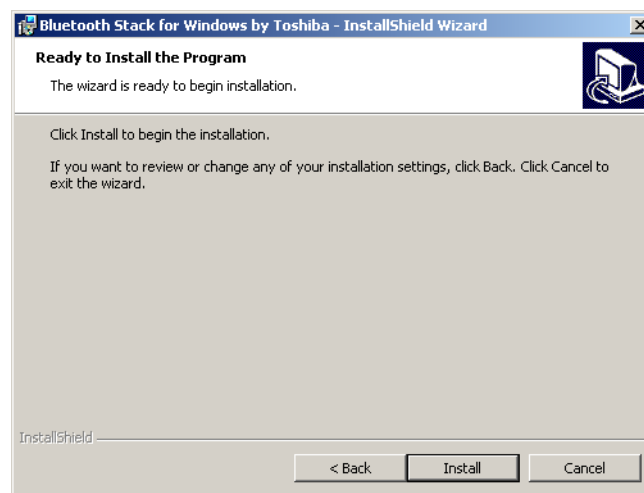


Figure 9: Bluetooth-Installation, Setup

Click now on the button *Install*, to start to copy the files. Afterwards you will be referred that the installation process can take about 15 minutes. Answer this question with a click on *OK*. If you did not connect the Bluetooth Dongle until now you will be asked to do so during the installation of the driver. Now wait until the installation is finished and all files has been transferred to your computer.

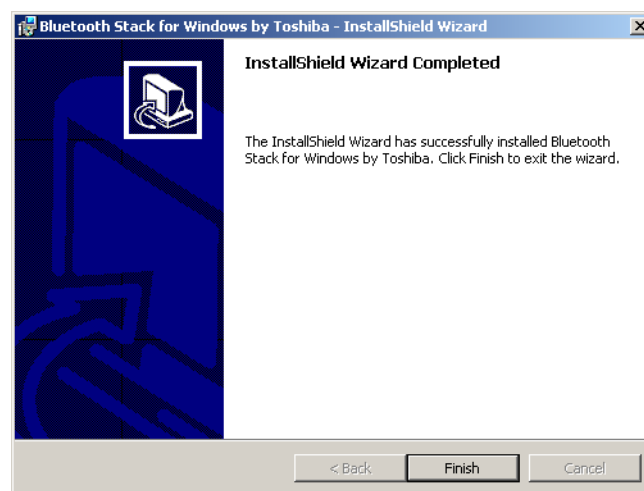


Figure 10: Bluetooth-Installation, Finish

As soon as the installation is finished, a dialog as in figure 10 appears. Click on the button *Finish*.

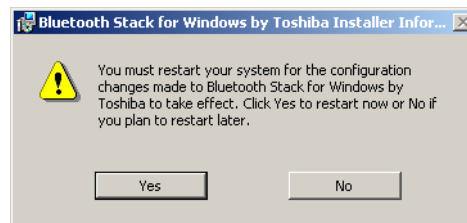


Figure 11: Bluetooth-Installation, Reboot

To terminate the installation you have to reboot your computer. A message like in figure 11 will appear. Confirm it with a click on the button *Yes*.

6.2 Software Configuration

To find out on which COM-Port your Bluetooth connection is been installed, click on *Start* → *Settings* → *Control Panel*. Double click the entry *Bluetooth Local COM*. A dialog will open like it is represented in figure 12.

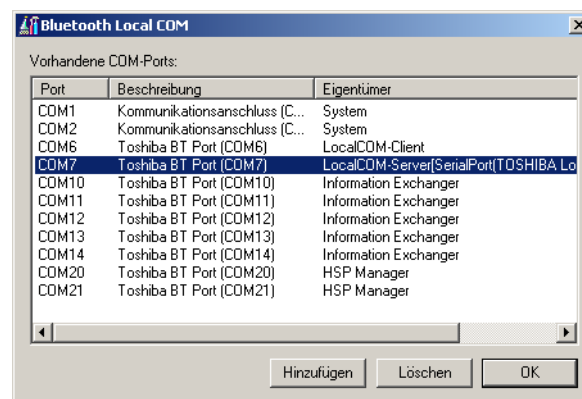


Figure 12: Determining the given COM-Port

There you can find the entry *LocalCOM-Server[SerialPort(TOSHIBA LocalCOM)]*, which indicates on which COM-Port your Bluetooth Dongle has been installed. This COM-Port you always have to indicate for the data transmission to the software program.

6.3 Configure connection

After installation and configuration of your Bluetooth connection you should test if the data transmission from your measuring instrument to the computer is working correctly.

Be sure that the USB Dongle is attached to your computer. Take your measuring instrument and power on the device. Select a operating mode, which includes the direct data transmission to PC. Additional information on direct data transmission to PC you can find in section 9 on page 37.

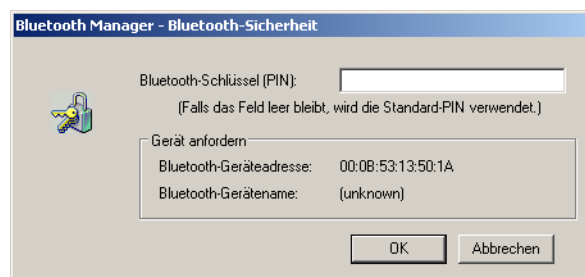


Figure 13:

As soon as you confirm your selected operating mode the device will try to get a radio connection to the computer. If this connection is successful a message like in figure 13 appears.

In this dialog you have to enter OKM. It is necessary to write in capital letters!

7 Installation of Radio Transmission (Conceptronic)

This section describes the installation of the USB Bluetooth Dongle. Consider that the represented figures not necessarily agree with the current version of your operating system or the version of your USB installation.

The instructions in this chapter are only valid for the Conceptronic usb-drivers. If you are using the Toshiba usb-drivers, please read chapter 6.

7.1 Windows XP, 2000, ME und 98SE

7.1.1 Install Software & Drivers

Now it is time to install the software and driver on your system. Therefore you have to insert your Bluetooth CD into the CD ROM drive of your computer. If the CD does not start automatically, please double click on Desktop and then double click on the symbol of your CD ROM drive. With a further double click on file `autorun.exe` you start the installation.

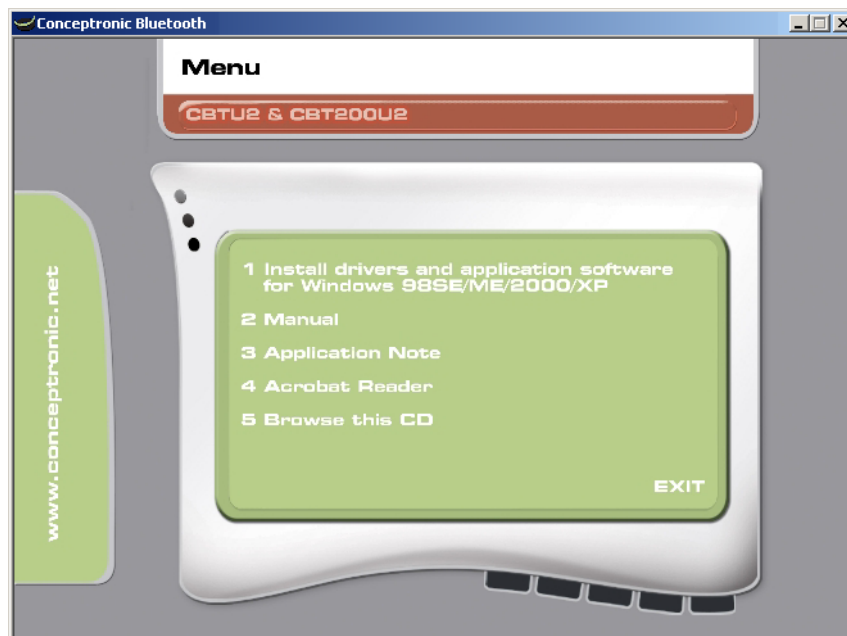


Figure 14: Bluetooth-Installation

The first window of your installation will open. Click here on the entry *1 Install drivers and application software* and follow the instructions on the screen.

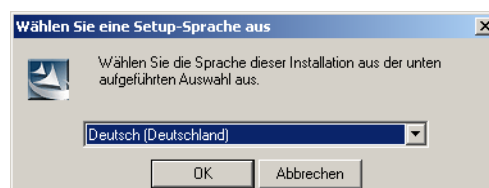


Figure 15: Bluetooth-Installation, Select Language

First there is a possibility to select the language of the installation. Click on *OK*, to change to the installation dialog from figure 16.

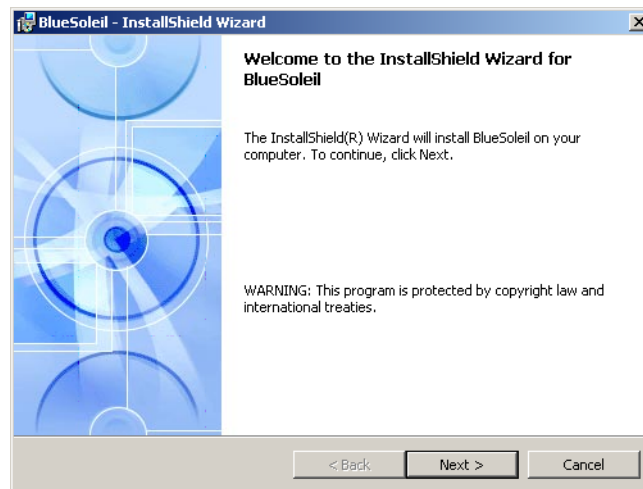


Figure 16: Bluetooth-Installation, Start

Now simply click on *Next*, to continue the installation. A dialog like in figure 17 appears on your screen.



Figure 17: Bluetooth-Installation, Licence Agreement

Select the option *I accept the terms in the licence agreement* and confirm it with a click on *Next*.

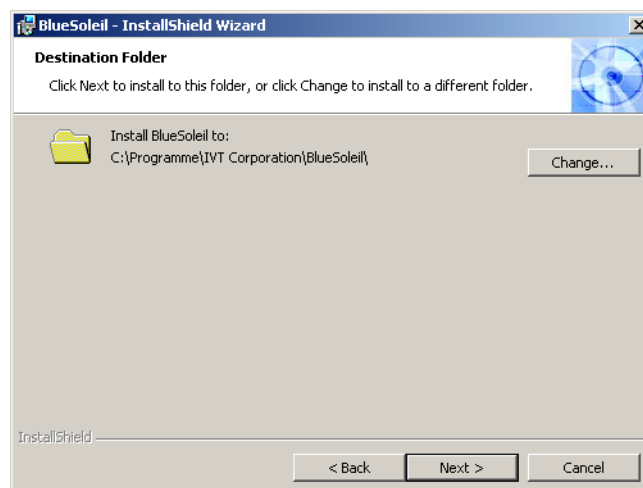


Figure 18: Bluetooth-Installation, Destination Folder

Inside the dialog from figure 18 you have the possibility to select another destination folder. Normally there is no changing necessary. Click only on the button *Next*.

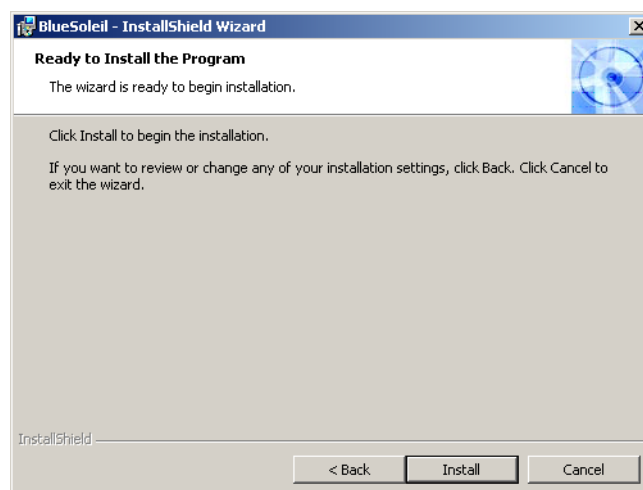


Figure 19: Bluetooth-Installation, Setup

Click now on the button *Install*, to start to copy the files. Now wait until the installation is finished and all files has been transferred to your computer.

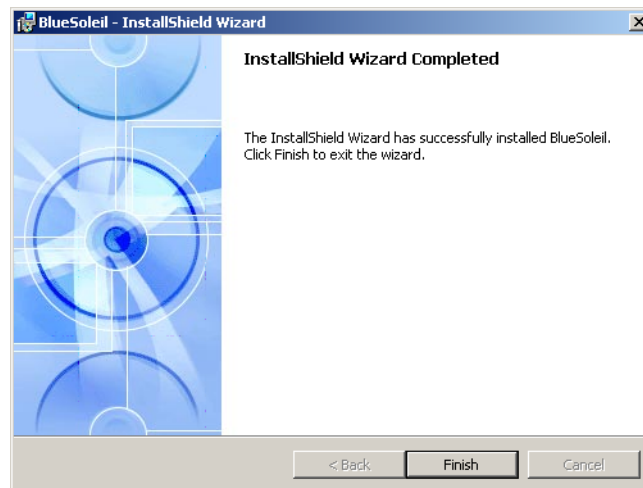


Figure 20: Bluetooth-Installation, Finish

As soon as the installation is finished, a dialog as in figure 20 appears. Click on the button *Finish*.

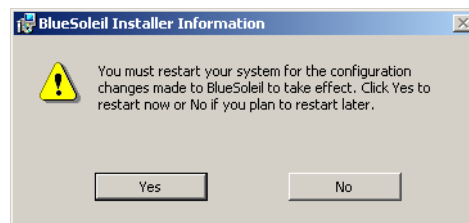


Figure 21: Bluetooth-Installation, Reboot

To terminate the installation you have to reboot your computer. A message like in figure 21 will appear. Confirm it with a click on the button *Yes*.

7.1.2 Install Bluetooth-Dongle

After you have reboot the computer the message from figure 22 appears on your screen. Now you have to plug in the Bluetooth-Dongle into your computer.

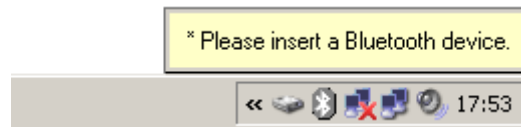


Figure 22: Bluetooth-Installation, Plug in the Bluetooth-Dongle

Now your computer tries to install automatically the Bluetooth-Dongle. Wait until a dialog window like in figure 23 appears on your screen. Click on the button *OK*.



Figure 23: Bluetooth-Installation, Set up Bluetooth-Dongle

After a successful set up of the Bluetooth-Dongle the message from figure 24 appears on your screen.



Figure 24: Bluetooth-Installation, Bluetooth-Dongle has been installed

To find out on which COM-Port the Bluetooth connection has been installed you have to click with the right mouse button on the Bluetooth symbol in the task bar. A dialog window like in figure 25 will appear.

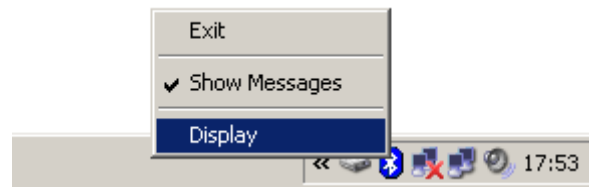


Figure 25: Find out the assigned COM-Port

If you click here on the entry *Display* a window like represented in figure 26 will open. Select in the menu *View* the option *Service Window*.

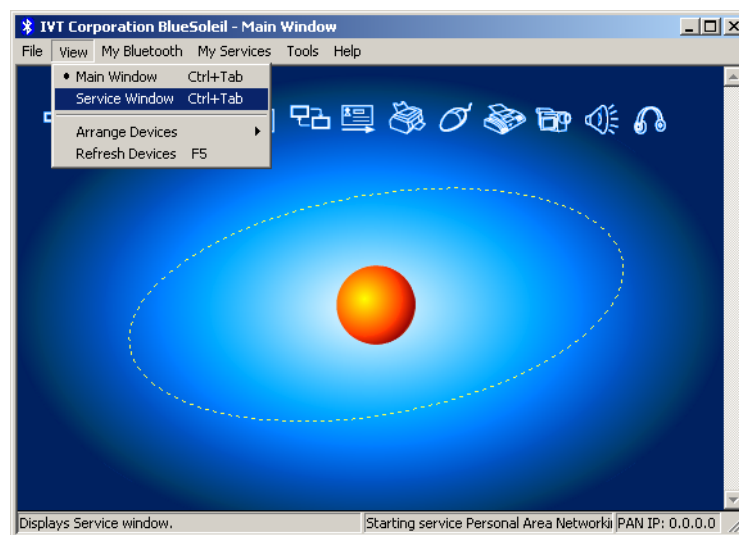


Figure 26: Find out the assigned COM-Port

An image like in figure 27 is represented. Behind the indication *Serial Port A* you can read the number of the assigned COM-Port. In this figure it is *COM7*, this can be different on your computer!

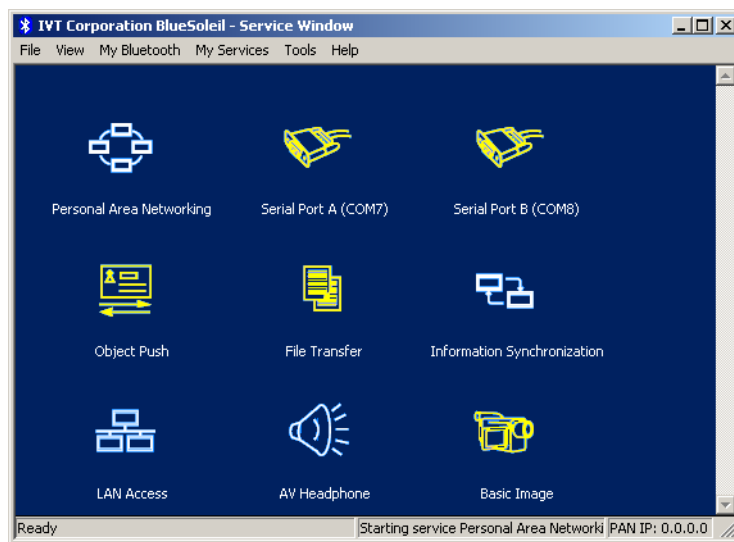


Figure 27: Find out the assigned COM-Port

7.1.3 Configure connection

After installation and configuration of your Bluetooth connection you should test if the data transmission from your measuring instrument to the computer is working correctly.

Be sure that the USB Dongle is attached to your computer. Take your measuring instrument and power on the device. Select a operating mode, which includes the direct data transmission to PC. Additional information on direct data transmission to PC you can find in section 9 on page 37.

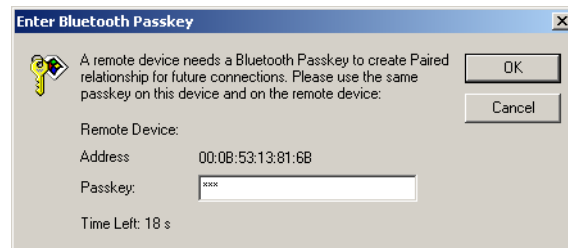


Figure 28: USB-Connection, Enter PIN-Code

As soon as you confirm your selected operating mode the device will try to get a radio connection to the computer. If this connection is successful a message like in figure 28 appears. In this dialog you have to enter OKM. It is necessary to write in capital letters! Confirm this entry by a click on the button *OK*.

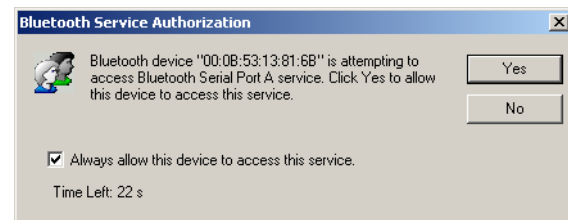


Figure 29: USB-Connection, Confirm Access

Another window will open where you mark the entry *Always allow this device to access this service* and confirm this entry by a click on *Yes*.

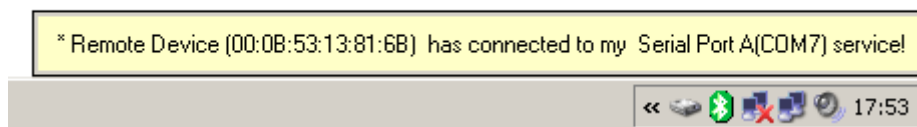


Figure 30: USB-Connection, Connection established

The message from figure 30 indicates that the connection is established. Now you have set up successfully your Bluetooth connection.

7.2 Windows Vista

For Windows Vista there are no additional drivers necessary. The basic functions are already provided by the operating system. To install the Bluetooth-Dongle on your Windows Vista system, please read the instructions in the following subsection!

7.2.1 Install Bluetooth-Dongle

Power on your computer and wait until Windows Vista is completely booted. After you signed up for your Windows Vista system plug in the Bluetooth-Dongle into a free USB slot. The message from figure 31 appears on your screen.

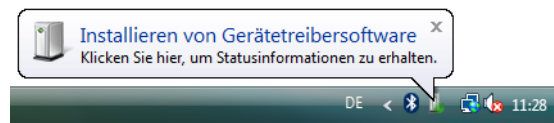


Figure 31: Windows Vista, Install Bluetooth-Dongle

Wait a little moment until the installation of the Bluetooth-Dongle is completed successfully and the message from figure 32 appears on your computer screen.

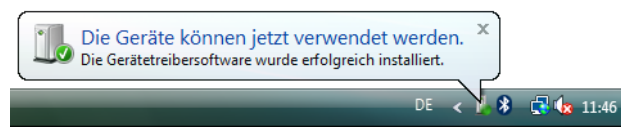



Figure 32: Windows Vista, Set up Bluetooth-Dongle

To use the Bluetooth-Dongle with your device, you have to apply a serial COM-Port. Therefore please click with the right mouse button on the Bluetooth symbol  on the down right side of your computer screen! A dialog similar to figure 33 will open. Click with the left mouse button on the entry *Open Bluetooth settings*.

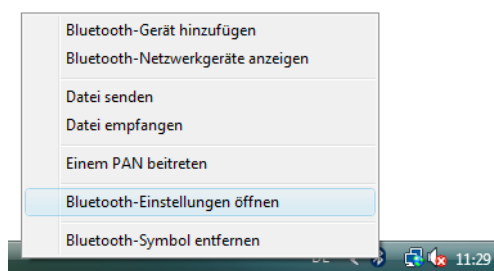


Figure 33: Windows Vista, Configure Bluetooth-Dongle

The dialog window from figure 34 will open. Click with the left mouse button on the tab *Options* and compare the settings of your computer with those from the figure. After that please click on the tab *COM-Ports*.

To transfer the measured data from your device to the computer, you have to establish now the serial COM-Port. The figure 34 (right side) shows the relevant dialog window. Click with the

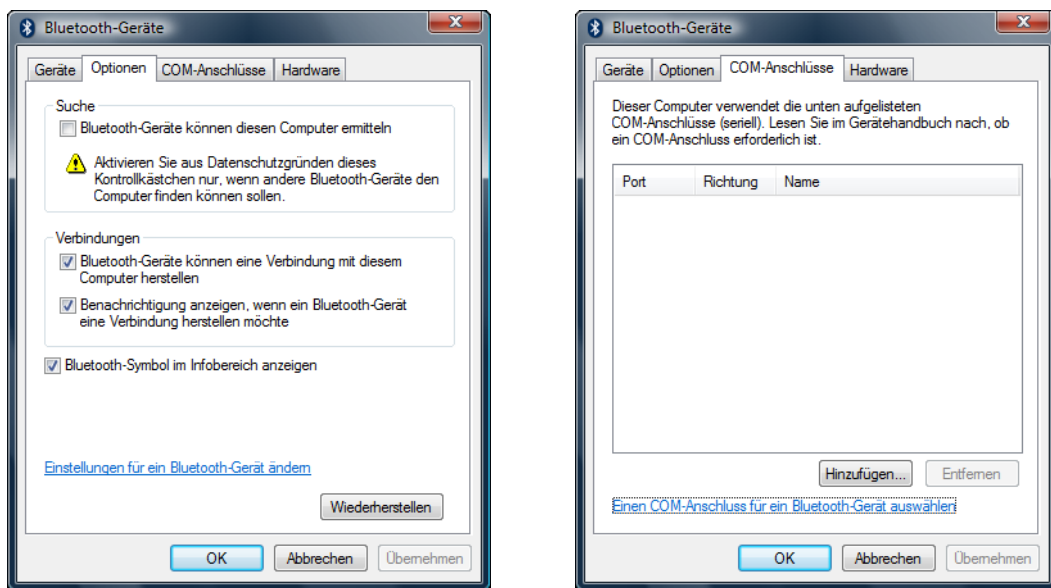


Figure 34: Windows Vista, Verify Bluetooth settings

left mouse button on the button *Add*. Another dialog window like represented in figure 35 will open.

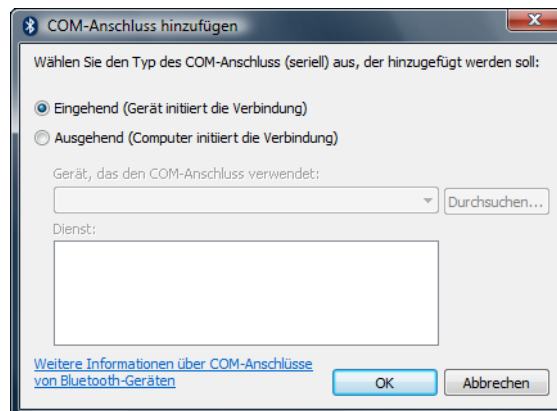


Figure 35: Windows Vista, Configure serial COM-Port

In this dialog you only have to select option *Incoming (Device initiate connection)* and confirm your selection by a click on the button *OK*. Automatically a serial COM-Port will be created and a Port referred. In this tutorial the Port *COM3* has been referred. This Port *COM3* has to be entered later in the software, to transfer measured data to your computer.

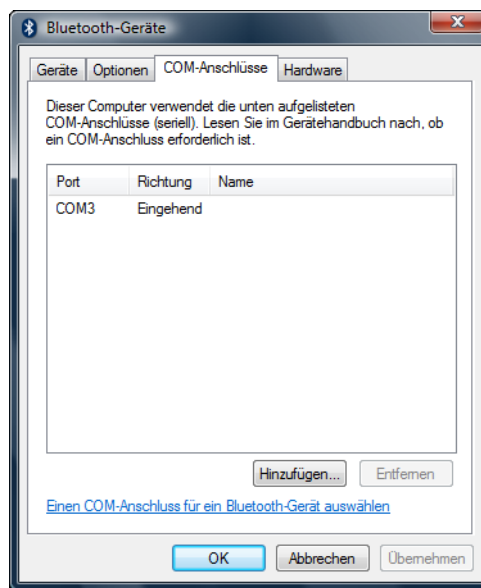


Figure 36: Windows Vista, Configure serial COM-Port

Again, in figure 36 the allocation of the serial COM-Port *COM3* is represented. The installation of the Bluetooth-Dongle is now completed. The next step is to establish a test connection, to control the connectivity.

7.2.2 Establish connection

Be sure that the Bluetooth-Dongle is plugged into your computer. Now take your measuring instrument and power it on. Select an operating mode which supports the direct data transfer to your PC. Detailed information you can find in section 9 on page 37. As soon as you confirmed this function on your device, a radio connection to your pc will be established. If it is successful the dialog from figure 37 appears.

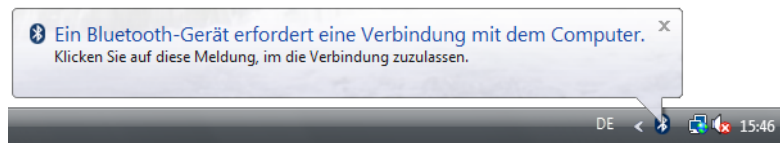


Figure 37: Windows Vista, Allow access

Click with the left mouse button inside this message to enter the PIN-Code. A dialog like in figure 38 appears on your computer screen.

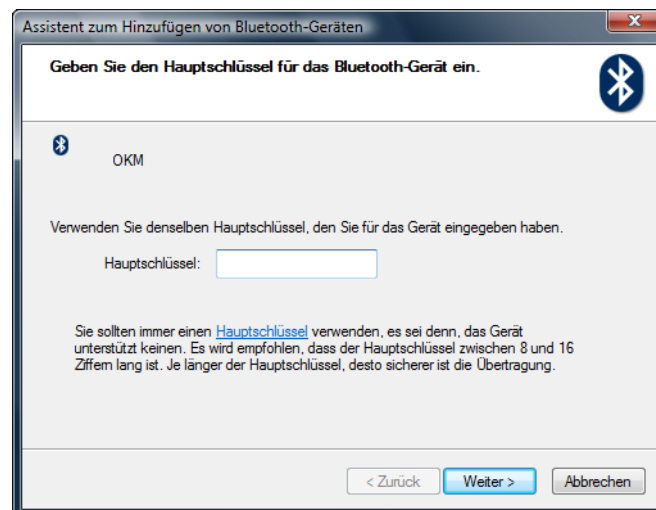


Figure 38: Windows Vista, Set up Bluetooth-Dongle

There please enter the PIN-Code OKM. Take care to use capital letters! Confirm the entry by a click on the button *Next*.

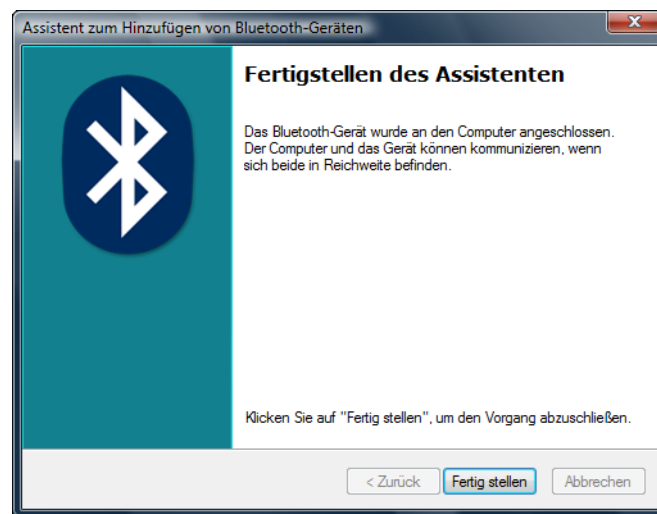


Figure 39: Windows Vista, Finish connection assistant

After a connection has been established the dialog from figure 39 appears. Just click on the button *Finish* to finish the connection assistant.

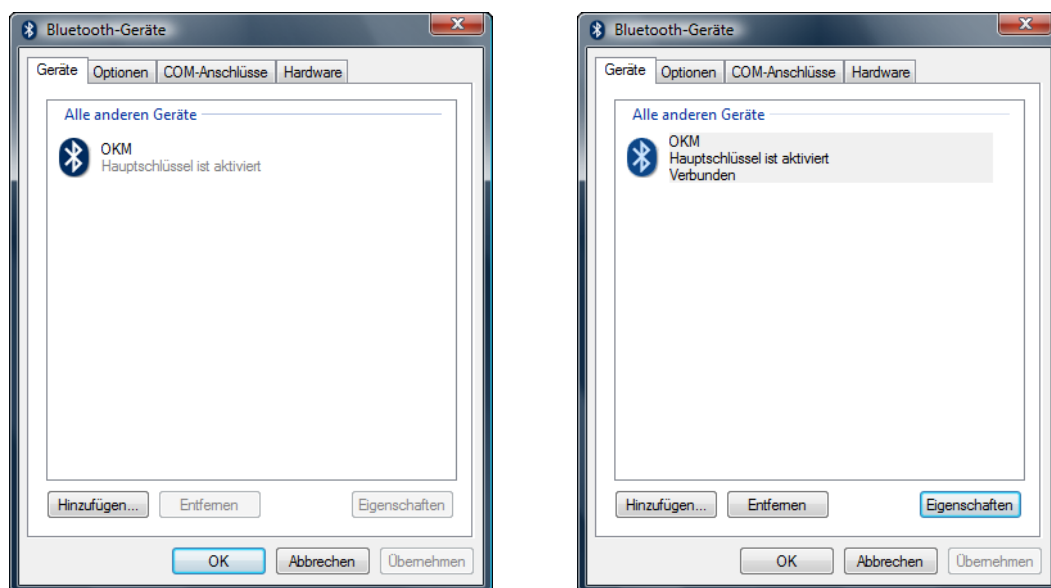


Figure 40: Windows Vista, List of Bluetooth devices

To find out the current status of your Bluetooth-Dongle click with the right mouse button on the Bluetooth symbol inside the down right corner of your screen. In the following menu (see figure 33 on page 29) please click with the left mouse button on the entry *Open Bluetooth settings*. A dialog like in figure 40 shows all existing devices. As soon as one of these devices has established a connection it will be indicated by the supplement *Connected*.

8 Control Elements

In this section you will learn more about the fundamental use of all control elements for this measuring instrument. All connections, inputs and outputs are explained in detail.

8.1 Front View

Figure 41 shows the front side of the control unit.

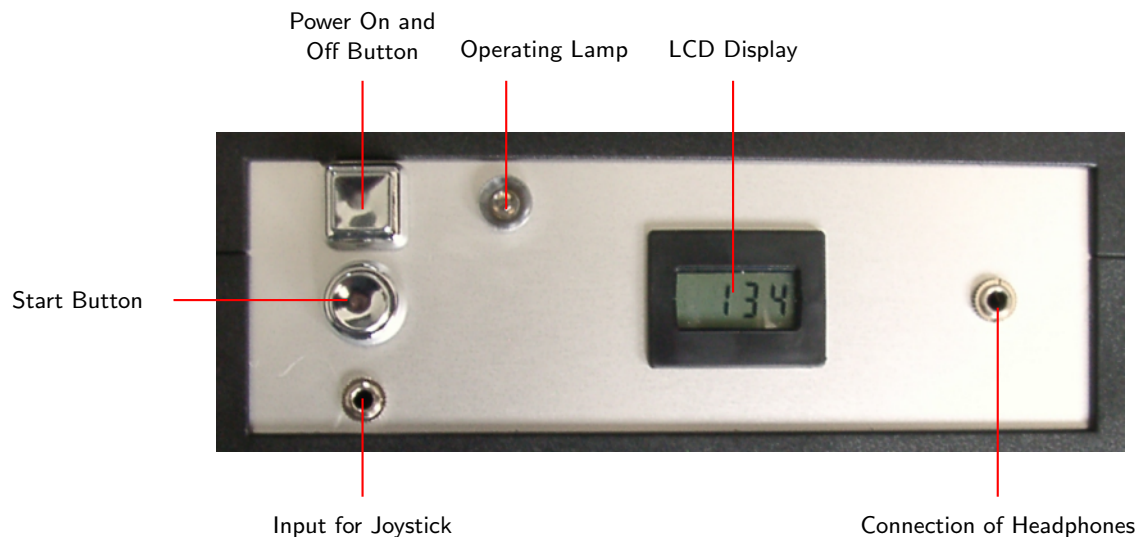


Figure 41: Front view

The **Power On and Off Button** is used to switch on and off the control unit. Before operating with your device you have to connect your external power supply and power it on.

The **Operating Lamp** shines, when the device is powered on and indicates the operating readiness of the control unit.

The **LCD Display** indicates how often the device was powered on. This display is only of interest for the repair and maintenance service.

The **Start Button** is used to start your measurement and to release manually every impulse in the appropriate mode.

The **Input for Joystick** is used to connect the delivered joystick to the device. He fulfills the same functions like the **Start Button**, but is more comfortable and can facilitate the measurement procedure.

The **Connection of Headphones** the delivered headphones can be connected.

8.2 Back View

Figure 42 shows the back side of the control unit with all connections.

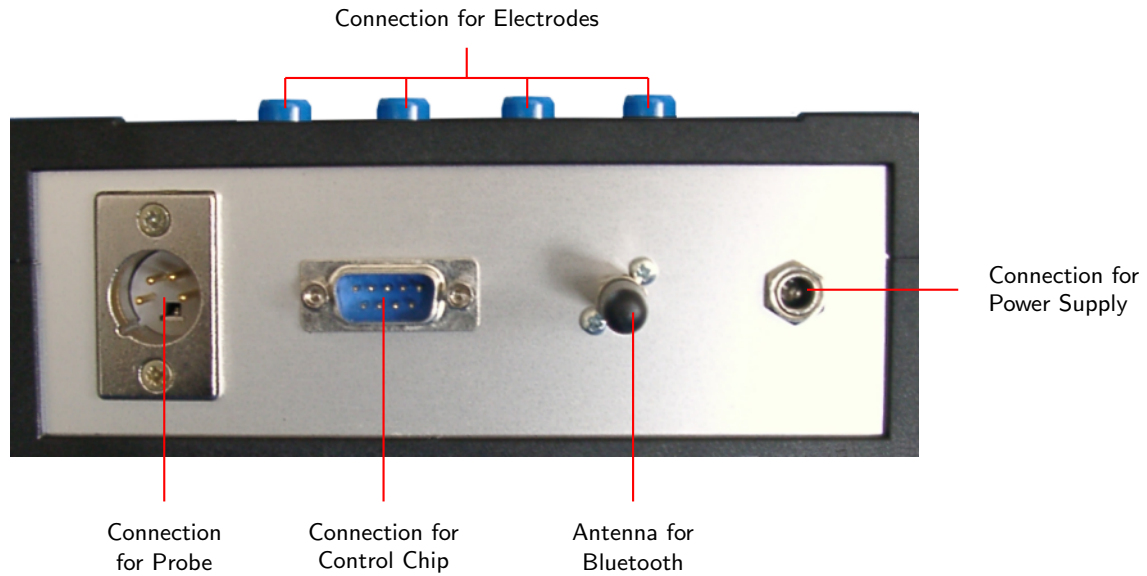


Figure 42: Back view

The Connection for Electrodes are used to connect the delivered electrodes for cavity detection.

The Connection for Power Supply is used to connect the device with the battery. Here the external power supply (Power Tank) has to be connected.

In the Connection for Probe the probe has to be plugged in.

The Connection for Control Chip is used for the connection of the delivered control chip. This chip is absolutely necessary for operating with the device.

The Antenna for Bluetooth is used for the data transmission to PC.

8.3 Touchpad for Menu Navigation

The top of the device is including a touchpad like in figure 43. With this touchpad you can navigate to the different operating modes in the menu.

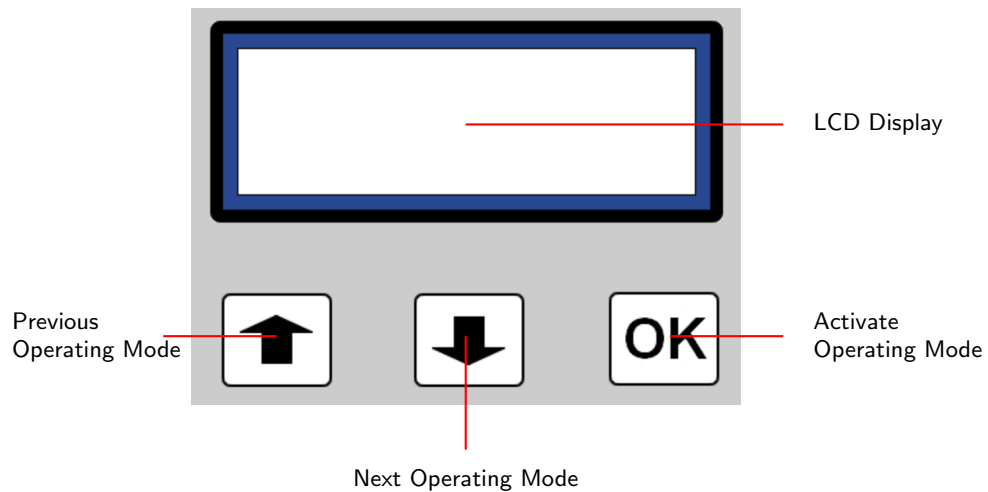





Figure 43: Touchpad

With keys  and  you can select every operating mode. To confirm your selection press .

9 Operating Modes

In this section you will learn more about the different operating modes of the device. Every function is been explained in particularity in its proper subsection. The right selection of an operating mode depends primarily of your planned measurement. So for example there are some special functions which have to be used for a first measurement in a unknown area to get a general overview, against which others are more suitable for a detailed search and analysis with a special processing software program.

The device possesses the following operating modes:

- **Activate Magnetometer**
Activate the magnetometer function.
- **Automatic Scan To PC**
Send measured values directly to a PC for analysis.
- **Automatic Scan In Memory**
Store measured values in the internal memory of the device.
- **Manual Scan In Memory**
Send measured values manually in the internal memory of the device.
- **Activate Cavfinder**
Geoelectrical procedure for cavity detection.
- **Transfer To PC**
Send measured values from internal memory of the device to a connected PC.

Via a touchpad on the top of your device you can select and confirm your appropriate operating mode.

9.1 Activate Magnetometer

In operating mode „*Activate Magnetometer*“ the device will activate the integrated magnetometer mode. This mode allows you to notice acoustically the existing field strength.

The higher the field strength the higher will be the acoustic signal. In this operating mode it is easily possible to find metallic objects (in particularity iron objects) close to the surface.

9.2 Automatic Scan To PC

With this operating mode you can measure until a depth of 18m ¹.

Immediately after confirming the operating mode by pressing the key `Activate operating mode`, the message *Connecting with Computer ...* will appear on the display of your device. This procedure can take a few seconds. Further information about the connection establishment via Bluetooth you can find in section ?? on page ??. Afterwards you will be asked to press the `Start`

¹The total penetration depth is strongly depending on the type of soil. In high mineralized areas the penetration depth can be minimized.

button.

If the measured values are transferred to the PC, automatically a graphical representation will be created. An example you can find in figure 44.

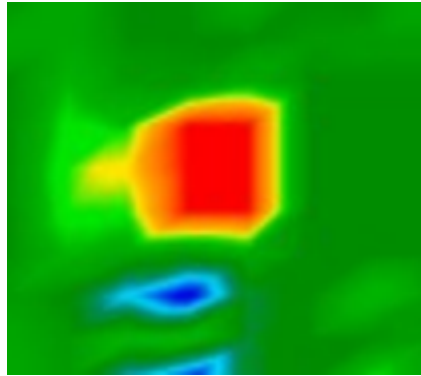


Figure 44: Graphical representation of a measurement

The graphical representation should mainly include green color values which represent normal ground. In this graphic could be included red or blue objects. Normally metallic objects are represented in red color and cavities, water deposits and diggings always in blue color. Beware that mineralisations in the ground also could be in red color. How to recognize minerals from „real“ metals, you can read in section 10.1 on page 41 or in your software manual.

Please read attentively section 10.2 on page 43, where the principle procedure of a graphical measurement is explained.

9.3 Automatic Scan In Memory

This operating mode is identically to function „Automatic Scan To PC“, but the measured values will be stored in the internal memory of the device and not transferred directly to a PC.

After having finished your measurement all data can be transferred to a PC with menu option „Transfer To PC“ .

Read also attentively section 10.2 on page 43, where the principle procedure of a graphical measurement is explained in detail.

9.4 Manual Scan In Memory

This operating mode is identically to function „Automatic Scan To PC“, but the measured values will be stored in the internal memory of the device and not send directly to a PC. Also every single impulse (memory of measured values) has to be activated manually. Therefore you can use the delivered Joystick or the Start button.

After having finished your measurement you can transfer all data to a connected PC with operating mode „Transfer To PC“ .

Please read also attentively section 10.2 on page 43, where the principle procedure of a graphical measurement is explained in detail.

9.5 Activate Cavfinder

With this operating mode you can find hidden cavities like caves, tunnels, shelters and others. Therefore it is necessary to connect the four electrodes. By pressing on Activate Operating Mode the measurement starts.

On your control unit there are 4 connections for the electrodes. To connect the electrodes in the right order you have to proceed like it is explained in figure 45.

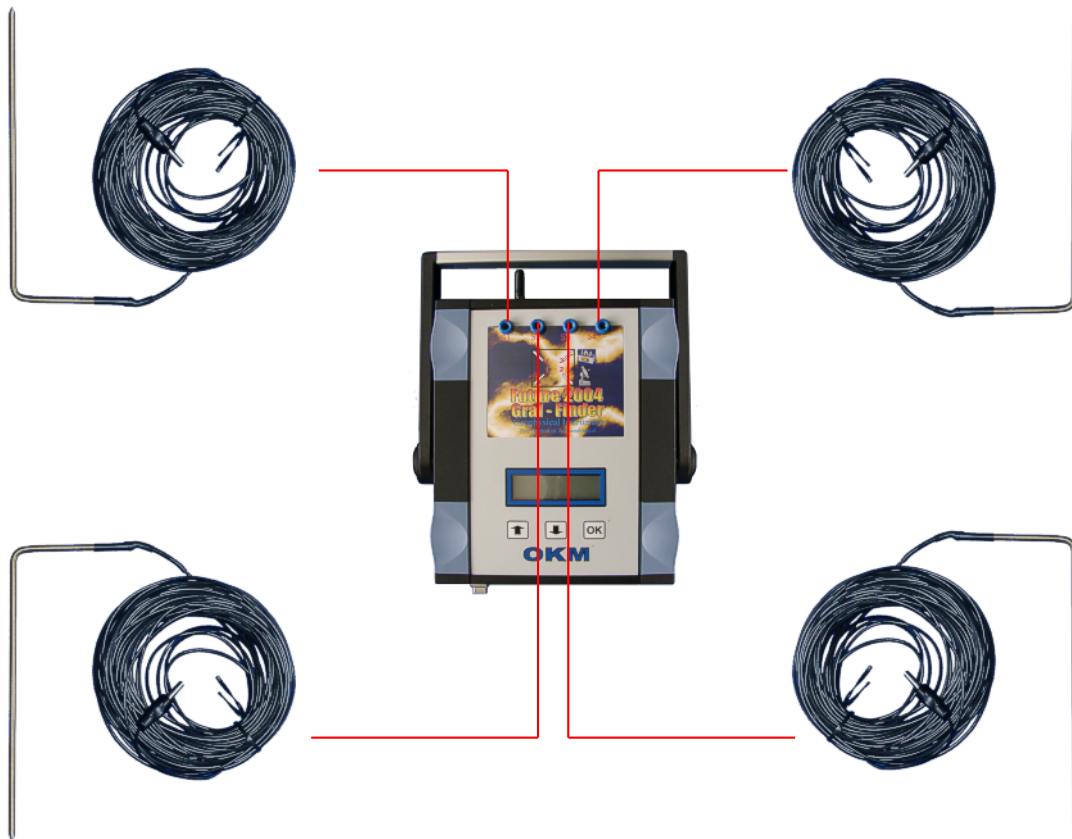


Figure 45: Anschluss der Elektroden

Mark out a square area with the four electrodes and connect the cables with the control unit. Therefore you have to put in the first electrode cable in the left connection. On the next connection you have to plug in the next electrode counter clockwise. Go on in this direction until all electrodes are connected to the device.

9.6 Transfer To PC

With operating mode „*Transfer to PC*“ measured values can be transmitted from the internal memory of the device to a computer. Therefore it is necessary that the software has to be prepared before starting the transmission. Only if all preparations of the software are made correctly and the software program is ready to receive the measured data you can confirm this function. Further information about a correct preparation of the software program you can find in the manual of your software product.

Immediately after confirming the operating mode by pressing the key *Activate operating mode*, the message *Connecting with Computer ...* will appear on the display of your device. This procedure can take a few seconds. Further information about the connection establishment via Bluetooth you can find in section ?? on page ?. Afterwards you will be asked to press the *Start* button.

The measured data will now be transmitted to your computer at one time.

10 Analysis and Evaluation of Measurements

Before measurement you have to know what kind of objects or cavities you are looking for and if the area you choose is suitable for this. Measurement without a plan will not give you the results you would like. For this reason please consider the following indications:

- What are you looking for (graves, tunnels, buried objects, ...)? This question has its effects on your concrete manner to measure an area. If you are looking for big objects you can enlarge your distance between the measure points (impulses), for small objects use small distances (see section 10.3 on page 44).
- Inform yourself about the area you select for measurement. Is it useful to search at this place? Are there historical indications, which confirm your speculations? What type of soil is on this area? Are there good conditions for data recording?
- Your first measurement in a unknown area has to be large enough to get representative values (f. ex. 20 impulses, 20 search lines).
- What is the form of the object you search? If you are looking for an angular metal box, the identified object in your graphic should have a form according to this.
- To get exact values concerning the depth measurement, the object has to be in the centre of the graphic, which means it has to be framed by normal reference values (normal ground). If the object is on the side of the graphic and not totally visible a correct depth measurement is not possible.
- There should not be more than one object in a graphic. This will influence the exactness of depth measurement.
- You should do at least two control scans to get sure about your results. So you also can recognize and isolate mineralized ground (see section 10.1 on page 41).

10.1 Metal or Mineralisation

At the beginning it is not always easy to make a difference between real objects and mineralized ground. In principle metals are represented in red color, but mineralized accumulations can also include red signals.

Here some advice how you can differentiate between a real object and a mineralisation:

- **Form**
If the object represented in your graphic has a special form (f. ex. rectangle, circle, ...), you can conclude of a possible real found.
- **Color**
If there are many yellow and orange color values around the object, it will be probably a mineralisation.
- **Depth**
With a small depth of about 0,10m or 0,40m there is a high possibility that there is only a mineralisation of the ground.

- **Color Filter**

If position and form of the object are changing with the use of the color filter it is probably a mineralisation.

- **Control Scan**

If position, depth and form of the object stay nearly the same, also in further control scans you can conclude of a real object. Also if some graphics look similiar you always have to compare all indications.

Figure 46 shows a real object (left side) and a mineralized accumulation (right).

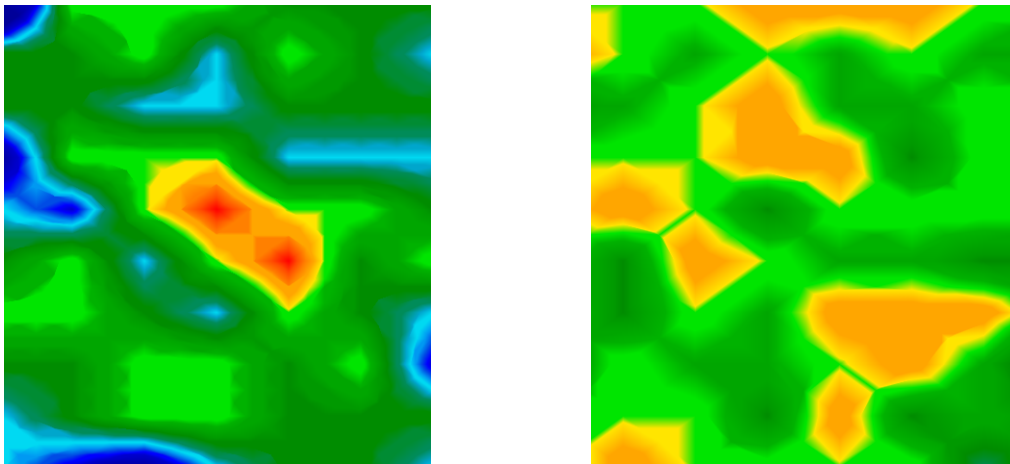


Figure 46: Comparison of object and mineral

10.2 General Procedure

The main rule for scanning an area is:

**The more exactly you scan an area
the better will be your graphical evaluation.**

You have to scan in a given manner that the software can calculate the measured values in the right way. Your device has following possibilities:

- **Zig-Zag**

Figure 47 shows all different ways of scanning in a scheme. The measurement starts at your starting point ① and ends at point ②.

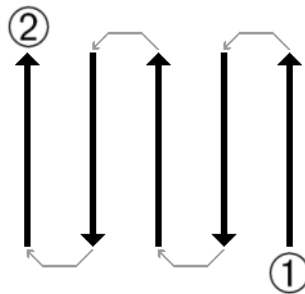


Figure 47: Given manner

If you have finished one scan line, the next line has to be on the *left* side. Do not change the direction of your probe.

The more you repeat your scanning above a possible object (control scans), the better you can decide afterwards if it is a real object or not. Temperature, other radio transmission, sun energy, mineralisation of the ground, loam, salt, water, etc. can influence negatively the measure results.

Before you start to dig, take your time to do some control scans. Repeat exactly the same scan about 3 - 5 times, to be sure about your results. Only if all these graphics have almost the same values you can be sure about your results.

Figure 48 is a graphical representation of a measured area. The blue rectangle marks a possible object in the ground.

To be absolutely sure that there is an object in the ground you have to do a control scan. Measure exactly the same area, same starting point and the same number of impulses and lines. Take also the same distance between the measure points. Figure 49 and 50 shows two possible measurements.

It is easy to recognize that the control scan in figure 49 is totally different from the first measurement in figure 48. This means only a mineralisation of the ground, not a concrete metallic object.

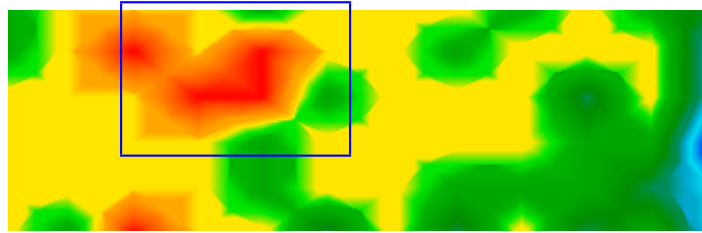


Figure 48: First measurement of an area

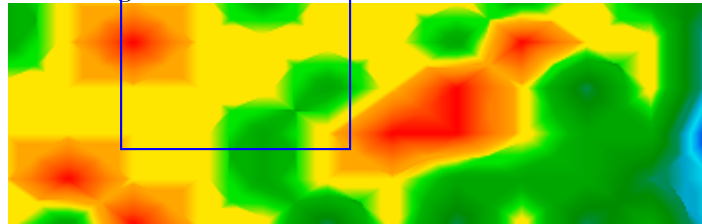


Figure 49: Control scan, Variant A

Even if the control scan in figure 50 is not exactly the same to the first one, you can see that the blue marked parts show nearly the same values. This is a reference for the existence of an object.

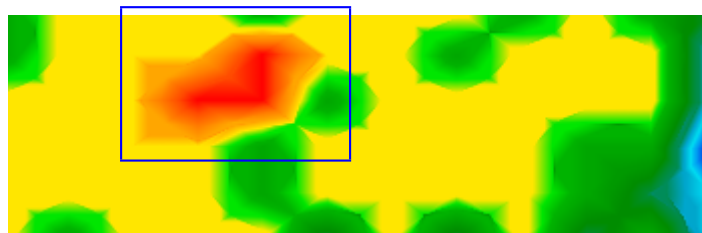


Figure 50: Control scan, Variant B

Before you can determine the depth of the detected object you have to scan a further image. It only should cover the blue marked area. All other metals and mineralized ground should be ignored because it would disturb the measurement. After this you can determine the correct depth.

10.3 Regulation of the Number of Impulses

There is no special rule for the number of impulses. But there are different aspects which has to be considered. These are for example

- the length of your measured area and
- the size of the objects you are searching.

The optimal distance between two impulses is about 20cm until 30cm. The smaller the distance between two impulses is the more exactly will be the graphical representation. If you are looking

for small objects you have to select a small distance, for big objects you can increase the distance between each impulse.

Figure 51 shows the effects of the distance and the number of impulses per scan line for some objects.

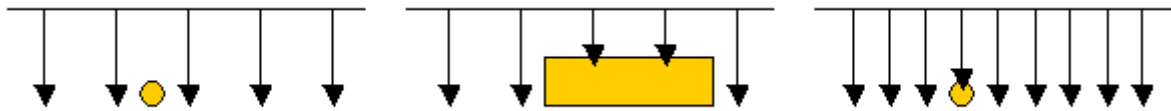


Figure 51: Effect of number of impulses and their distance

Figure 52 shows the difference between very few impulses (left side) and much more impulses on the same scan line length (right side). The second record (right side) shows much more details and also smaller objects can be seen.

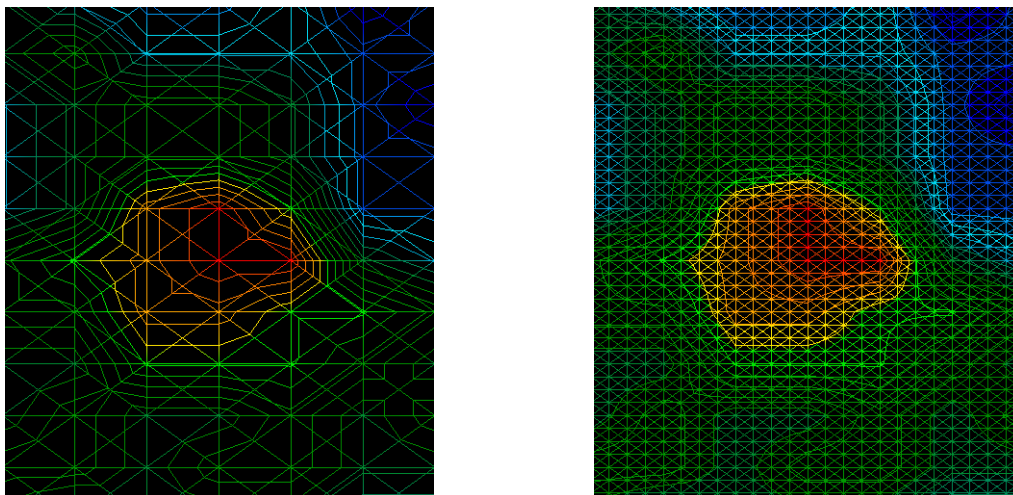


Figure 52: Comparison of small and high number of impulses

Do not hesitate to record more measurements with different numbers of impulses. For example you can scan a large area before doing a second detailed precision measurement. Especially for the search of bigger objects you can proceed like this. With this manner you can measure relatively fast a large area and afterwards you can record the interesting subsection.

Further information about the graphical analysis you can find in the appropriate software manual.

11 Danger of Explosion during Excavation

Unfortunately, the last two world wars also made the ground in many places of the world a potentially explosive scrap heap. A host of those lethal relics are still buried in the ground. Do not start digging and hacking for an object wildly when you receive a signal of a piece of metal from your device. Firstly, you might indeed cause irreparable damage to a truly rare find, and secondly, there is a chance that the object reacts in an insulted way and strikes back.

Note the colour of the ground close to the surface. A red or reddish color of the ground is an indicator of rust traces. As regards the finds themselves, you should definitely pay attention to their shape. Curved or round objects should be a sign of alarm, especially if buttons, rings or little pegs can be identified or felt. The same applies to recognizable ammunition or bullets and shells. Leave that stuff where it is, do not touch anything and, most importantly, do not take any of it home with you. The killing machines of war made use of diabolical inventions such as rocker fuses, acid fuses and ball fuses. Those components have been rusting away in the course of time, and the slightest movement may cause parts of them to break and be triggered. Even seemingly harmless objects such as cartridges or large ammunition are anything but that.

Explosives may have become crystalline over time, that is, sugar-like crystals have formed. Moving such an object may cause those crystals to produce friction, leading to an explosion. If you come across such relics, mark the place and do not fail to report the find to the police. Such objects always pose a danger to the life of hikers, walkers, farmers or children.

12 Maintenance and Services

In this section you will learn how to maintain your measuring instrument with all included accessories to keep it in good condition a long time and to get good measuring results.

The following list indicates what you absolutely should avoid:

- penetrating water
- strong dirt and dust deposits
- hard impacts
- strong magnetic fields
- high and long lasting heat effect

If you want to clean your device please use a dry rag of soft material. To avoid any damage you should transport the device and accessories always in the appropriate carrying cases.

Beware that all batteries and accumulators are always charged fully while operating with your system. You should only load the batteries when they are completely discharged no matter if you are working with the external power supply or with the internal accumulators. In this way a long durability of the used batteries is guaranteed.

To load the external and internal batteries you have to use only chargers which are part of our scope of delivery.

Index

- Activate Operating Mode, 39
- Activate operating mode, 37, 40
- Bluetooth, 16, 21
- Bluetooth-Dongle, 25, 29, 31–33
- Dongle, 16, 21
- Headphones, 34
- Joystick, 34, 38
- PIN-Code, 32
- Start Button, 38
- Start button, 38, 40
- USB, 16, 21